

# SAINT LOUIS **CITY** **RECYCLES**

**Small Steps. BIG IMPACT.**

The Ultimate Waste Disposal Guide  
for St. Louis City Residents



1

[www.STLCityRecycles.com](http://www.STLCityRecycles.com)

## Recycling is Easy!

**STEP 1**—Find out what you can recycle.

**STEP 2**—Designate a space in your home for a recycling bin and place clean, dry recyclables there until you're ready to take them out for collection.

**STEP 3**—Rinse or wipe off excess food residue, empty liquids. *(Tip: If you can't get any more food or drink out of the container, it's usually ready to recycle! Be sure to reattach the lid!)*

**STEP 4**—Flatten all cardboard.

**STEP 5**—Empty recyclables loose into your blue City dumpster or rollcart, or take them to a nearby dropoff recycling site.



**Your Big Impact:**

**65 pounds recycled per minute in St. Louis City!**

# Recycling 101

## WHAT GOES IN YOUR BLUE BIN



Paper



Flattened  
Cardboard



Plastic Bottles &  
Containers



Glass Bottles &  
Jars



Metal Food &  
Beverage Cans



Food & Beverage  
Cartons

*Keep items loose, clean & dry. Always flatten your cardboard.*

## AND WHAT DOESN'T



Plastic Bags &  
Film \*



Styrofoam



Food Waste



Sharps & Needles

For a more detailed item list visit [www.STLCityRecycles.com](http://www.STLCityRecycles.com)

\*Recycle plastic bags & plastic film at your local grocery store.

[www.STLCityRecycles.com](http://www.STLCityRecycles.com)

314-772-4646 | [recycle@stlouis-mo.gov](mailto:recycle@stlouis-mo.gov)

# How to Recycle: Dumpsters

## With a Blue Alley Dumpster, Recycle at Any Time!

1. Collect recyclables and keep them separate from trash using an in-home recycling bin, paper bag, plastic tub or cardboard box.
2. Empty recyclables **loose** into the blue recycling dumpster (**no plastic bags please**). Trash should go in the brown dumpster and yard waste into the green dumpster.
3. Help keep your community clean by closing dumpster lids after each use. This protects recyclables from wind and rain.
4. If your dumpster has a metal slotted lid, please do not prop it open so that recyclables can stay dry.



Recycling helps keep our alleys clean and improves public health! Cleaner alleys can also reduce crime and illegal dumping!

**Problems? (E.g. Broken lid, missed collection, etc.)**  
**Contact the Citizens' Service Bureau at 314-622-4800**  
**or online at [www.StLouis-MO.gov/CSB](http://www.StLouis-MO.gov/CSB)**



# Collection Schedule: Dumpsters

## Dumpster Collection Schedule

**Recycling  
(Blue Dumpster)**

**Trash  
(Brown Dumpster)**

**Yard Waste  
(Green Dumpster)**

All dumpsters are picked up a minimum of once a week, or more as needed.

You can find out your collection days at [www.STLCityRecycles.com](http://www.STLCityRecycles.com) or by calling the Citizens' Service Bureau at 314-622-4800



[www.STLCityRecycles.com](http://www.STLCityRecycles.com)

314-772-4646 | [recycle@stlouis-mo.gov](mailto:recycle@stlouis-mo.gov)

# How to Recycle: Rollcart

## Rollcart 101

1. Residents who do not have alley access should have one 96-gallon blue rollcart for their recyclables and one 96-gallon green rollcart for trash and yard waste.
2. Each rollcart is marked specifically for your address and must remain there.
3. When your in-home recycling bin is full, empty its contents **loose** into the blue recycling rollcart (**no plastic bags please**).
4. Help keep your community clean by closing rollcart lids after each use.
5. Roll your cart to the curb by 5:30 a.m. on your regular collection day. Be sure your rollcart is on the street (not on the sidewalk).
6. Position the cart so the lid opens toward the street and is five feet away from all obstructions, including cars, poles, trees and other rollcarts.
7. Bring your rollcart back onto your property (e.g. garage, storage area, yard, fenced area, gate) by 11 p.m.



With a blue recycling rollcart, it's easy to see how much you recycle!

**Problems? (E.g. Missing cart, damage, missed collection, etc.)**

**Contact the Citizens' Service Bureau at 314-622-4800**

**or online at [www.StLouis-MO.gov/CSB](http://www.StLouis-MO.gov/CSB)**

# Collection Schedule: Rollcart

## Rollcart Collection Schedule

	Recycling (Blue Rollcart)	Trash (Green Rollcart)	Yard Waste (Green Rollcart)
Collection Schedule A	Thursday	Monday	Wednesday
Collection Schedule B	Friday	Tuesday	Wednesday

You can find out your collection days at [www.STLCityRecycles.com](http://www.STLCityRecycles.com)  
or by calling the Citizens' Service Bureau at 314-622-4800



[www.STLCityRecycles.com](http://www.STLCityRecycles.com)

314-772-4646 | [recycle@stlouis-mo.gov](mailto:recycle@stlouis-mo.gov)

# Trash and Yard Waste

## Trash Goes in a **Brown Dumpster** or **Green Rollcart**

- **Examples:** Food waste, bagged garbage, pet waste, diapers, chip bags, disposable utensils and vinyl toys.
- **Not permitted:** Household hazardous waste\* (e.g. pesticides, antifreeze, paint thinners, etc.), clean recyclables and yard waste.
- Many items can be donated or reused before sending them to the landfill. Find out more at [www.STLCityRecycles.com](http://www.STLCityRecycles.com)



## Yard Waste Goes in a **Green Dumpster** or **Rollcart**

- **Examples:** Grass clippings, leaves, garden trimmings, tree branches, etc.
- Please cut limbs to fit in dumpster.
- Excess limbs more than 3" in diameter and 3' in length should be **bundled** and put out for bulk pickup.



\*Learn how to dispose of household hazardous waste at [www.HHWSTL.com](http://www.HHWSTL.com)

**Remember, green rollcarts full of yard waste are collected on Wednesdays. Please do not include any trash or recyclables.**



# Bulk-E Pick Up

## How It Works

**What:** City residents serviced by the Refuse Division can place up to **3 large items** per household per month out for bulk and electronics pickup (e.g. furniture, appliances, tires, electronics, automotive batteries, bundled branches).



**When:** Place items at your designated bulk pickup site by **6 a.m. on the Monday of your bulk pickup week**. To find your bulk pickup schedule call the Citizens' Service Bureau at 314-622-4800 or visit [www.STLCityRecycles.com](http://www.STLCityRecycles.com). Items will be picked up **by the end** of your designated bulk pickup week.

**Where:** Residents who use rollcarts should place bulk items at the curb in front of your home. Residents who use alley dumpsters should place bulk items in the alley directly behind your home, not by the dumpster.

**Why:** Following the bulk pickup schedule helps keep our streets, alleys and dumpsters as clean as possible.



[www.STLCityRecycles.com](http://www.STLCityRecycles.com)

314-772-4646 | [recycle@stlouis-mo.gov](mailto:recycle@stlouis-mo.gov)

# Recycling Beyond Your Blue Bin

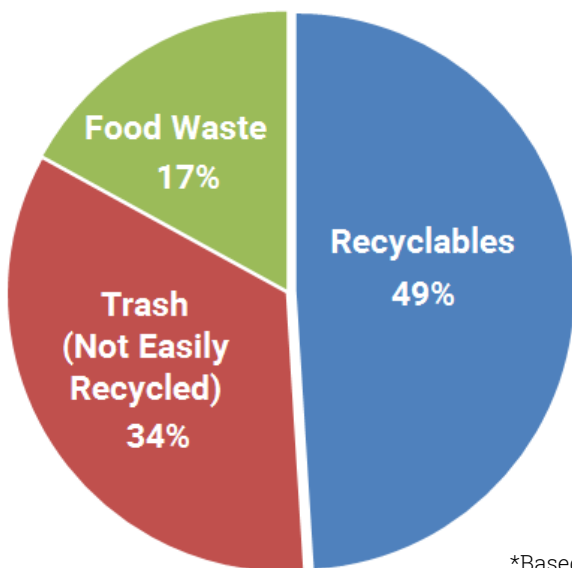
In St. Louis, we have facilities that recycle and reuse:

- Batteries
- Lightbulbs
- Paint
- Shoes
- Clothing and textiles
- Electronics
- Furniture
- Construction and demolition waste



Search our online database for places that recycle or accept donations of what you have!

[www.STLCityRecycles.com/database](http://www.STLCityRecycles.com/database)



**HALF** of what St. Louis City residents throw in the trash can easily be recycled!\*

\*Based on a most recent MO waste composition study

**DID YOU KNOW—There are more than 16,000 recycling-related jobs in the STL Metro Area!**

# Dropoff Options

## 60+ Recycling Sites Open 24-7!



- Do you live in an apartment building that doesn't have recycling?
- Did you move into a new house and have more moving boxes than will fit in your alley recycling dumpster?

St. Louis City residents have access to 60+ dropoff recycling sites operated by the City's Refuse Division. These sites are for residential use only. To find a dropoff site near you, visit [www.STLCityRecycles.com/dropoff/](http://www.STLCityRecycles.com/dropoff/)

### Citizen Dropoff

St. Louis City residents can bring up to one pickup truck load of recycling, trash, bulk items or yard waste to a City Transfer Station each month free-of-charge. You must provide proof of residency and your most recent water/trash bill showing no outstanding balance.

**North Transfer Station:** 201 North Humboldt, 63147  
**South Transfer Station:** 4100 South First Street, 63118  
For details call 314-647-3111

[www.STLCityRecycles.com](http://www.STLCityRecycles.com)

314-772-4646 | [recycle@stlouis-mo.gov](mailto:recycle@stlouis-mo.gov)

# Multifamily Building Recycling

## Ask Your Property Owner or Manager to Start Recycling at Your Building!

Recycling in multifamily dwellings is great for the residents and can save property managers money as well. Although the City's Refuse Division does offer service to multifamily dwellings, many property managers choose to use private waste haulers. Even if your waste is collected by a private hauler, you can still recycle!



Find tips and resources for how to get started with recycling in multifamily buildings, including a list of recycling haulers at

[www.STLCityRecycles.com/  
recycle-with-us/how-it-works/  
recycle-in-multifamily-buildings/](http://www.STLCityRecycles.com/recycle-with-us/how-it-works/recycle-in-multifamily-buildings/)

**BLUE BIN TIP—Pizza boxes & paper plates are still recyclable as long as grease spots are no bigger than the palm of your hand!**



# Other City Services

## Brightside St. Louis

Brightside St. Louis has been cleaning and greening our City for over 30 years! Beautification programs include:

- **Graffiti removal** — at no cost to the property owner.
- **Blitz clean-ups** — City residents and organizations can borrow tools from Brightside for neighborhood clean-up events and public space plantings!



- **Greening** — Visit the Demonstration Garden or participate in programs like Blitz Blooms and Neighbors Naturescaping.

For more information and to reserve tools visit

[www.BrightsideSTL.org](http://www.BrightsideSTL.org)

[www.STLCityRecycles.com](http://www.STLCityRecycles.com)

314-772-4646 | [recycle@stlouis-mo.gov](mailto:recycle@stlouis-mo.gov)

# Help Us Help You

## What If I Have a Problem with My Trash or Recycling?

Report all problems to the Citizens' Service Bureau (CSB), the service department for the City of St. Louis.

### **Make a request to the CSB:**

ONLINE: [www.StLouis-MO.gov/CSB](http://www.StLouis-MO.gov/CSB)

CALL: 314-622-4800

TWEET: @STLCSB

**Examples include:** Damage to dumpster or rollcart, collection missed, missing rollcart, etc.

## What About Illegal Dumping?

It's illegal for businesses and commercial trucks to use the City's residential dumpsters.

- Get the license plate number and description of vehicle
- Report it to the CSB
- If it's a commercial truck, call 911



**DID YOU KNOW—Sending trash to the landfill costs the City  
\$18 per ton MORE than recycling!**

# Get Involved!

## Take The Pledge To Recycle

# Small Steps. **BIG IMPACT.**

Join your neighbors in taking small steps to make a BIG IMPACT in St. Louis! Take our online pledge at [www.STLCityRecycles.com](http://www.STLCityRecycles.com)

### Become a Recycling Ambassador

Become a recycling ambassador and help encourage others to recycle! Recycling Ambassadors:

- Share recycling information with family, friends, neighbors and coworkers
- Volunteer to help with recycling-related projects and events
- Display recycling window clings
- Share Saint Louis City Recycles social media posts



Sign up to become a Recycling Ambassador online at [www.STLCityRecycles.com](http://www.STLCityRecycles.com)

Connect with us online! @STLCityRecycles



[www.STLCityRecycles.com](http://www.STLCityRecycles.com)

314-772-4646 | [recycle@stlouis-mo.gov](mailto:recycle@stlouis-mo.gov)



Brightside St. Louis  
4646 Shenandoah Ave  
St. Louis, MO 63110

Non Profit Org.  
U.S. Postage  
**PAID**  
St. Louis, Missouri  
Permit No. 3627



## K-12 Outreach & Education

We offer classroom activities and presentations to all schools and youth groups located in the City of St. Louis! Call 314-772-4646 or email **[recycle@stlouis-mo.gov](mailto:recycle@stlouis-mo.gov)** to schedule a presentation or borrow books from our lending library.

## Community Outreach

Invite us present at your next neighborhood/community meeting or event! We're always happy to answer any recycling questions you and your neighbors may have. Call 314-772-4646 or email **[recycle@stlouis-mo.gov](mailto:recycle@stlouis-mo.gov)** to schedule a presentation.

<sup>1</sup> Denotes images provided by Gwendolyn Mercer Photography [www.gwendolynmercerc.com](http://www.gwendolynmercerc.com)

MISSOURI



NATURAL  
RESOURCES



*Project funded in part by the St. Louis-Jefferson  
Solid Waste Management District and the  
Missouri Department of Natural Resources.*



brightside  
ST. LOUIS

